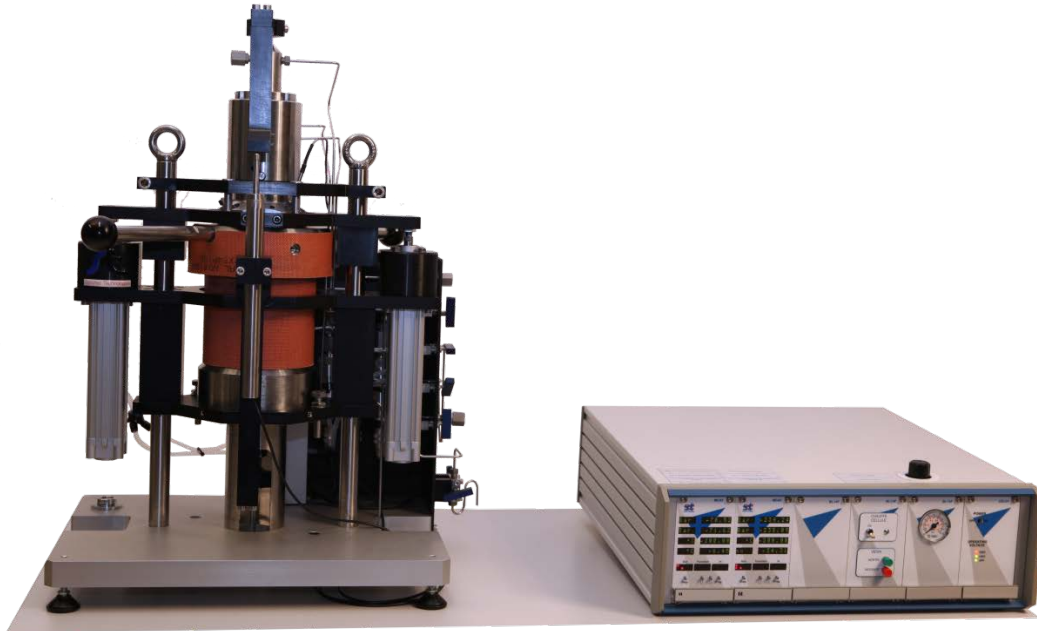




Triaxial Cell 40 Mpa 50°C - TRI-X 40/50

"Small is beautiful"



General Features

The TRI-X 40/50 allows the user:

- Having a quick and easy access to the sample after the total clean-up of the confining chamber.
- Having a 360° sample access and on all the height of the TRI-X cell to avoid any issues during the sample installation.
- Equipped with all suggested options, the TRI-X cell 40/50 can do following experimentations:
 - Permeability Measurement
 - Pore Bulk Measurement
 - Resistivity Measurement
 - Acoustic Resistivity Measurement P&S Waves
 - Axial Load Measurement
 - Radial Deformation
 - DeltaL/L Measurement
 - DeltaØ/Ø Measurement

Specifications	
Working Temperature	Ambient to 50°C
Max. Working Axial Pressure	Up to 40 MPa
Max. Working Radial Pressure	Up to 40 MPa
Sample Diameter	1.5"
Sample Length	3"

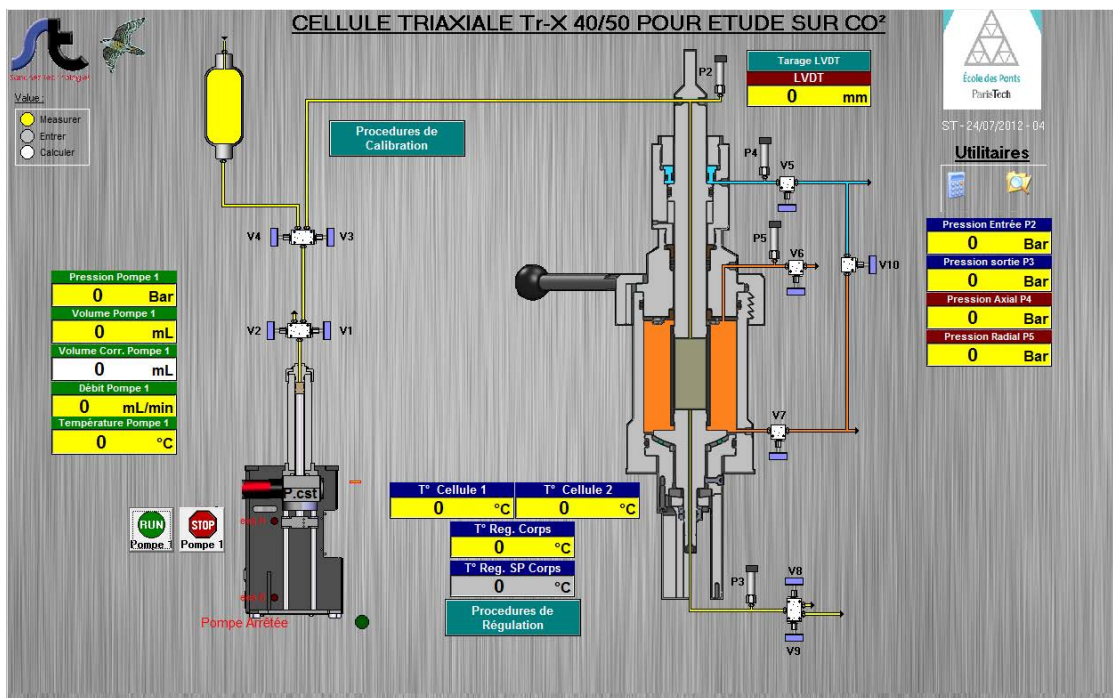


Triaxial Cell 40 Mpa 50°C - TRI-X 40/50

This TRI-X is composed of following elements:

- A TRI-X cell with a piston, a seat and a piston support with a chamber
- A measurement system with an electronic cabinet and different pressure sensors and temperature probe
- Falcon® software for the data acquisition and a PC desktop with the latest configuration
- A system for CO2 injection composed of our STIGMA pump 1000/300
- A system for axial and radial confining pressure with our double STIGMA 500/700

Example of synoptic:



Closed TRI-X 40/50



Open TRI-X 40/50

