



VPDSV 500-1500D Heated



General Features

This equipment is specially designed to inject in continuous flow. It's composed of 2 double screw pumps. The volume of each pump is 500 ml. Each body is heated with PID controller to inject fluid under HT.

The pump, with a synoptic (FALCON software) or with electric cabinet, can be controlled and log the values of the different parameters (pressure, volume, temperature, flow rate).

Specifications	
Volume	500 ml for each pump
Pressure	1500 bar (20 000 psi)
Temperature	Ambient to 200°C
Volume Accuracy	10 ⁻³ ml
Pressure Accuracy	0.1% FS
Temperature Accuracy	0.1°C
Flow Rate	0 to 1600 ml/h



VPDSV 500-1500D Heated

Each pump can be:

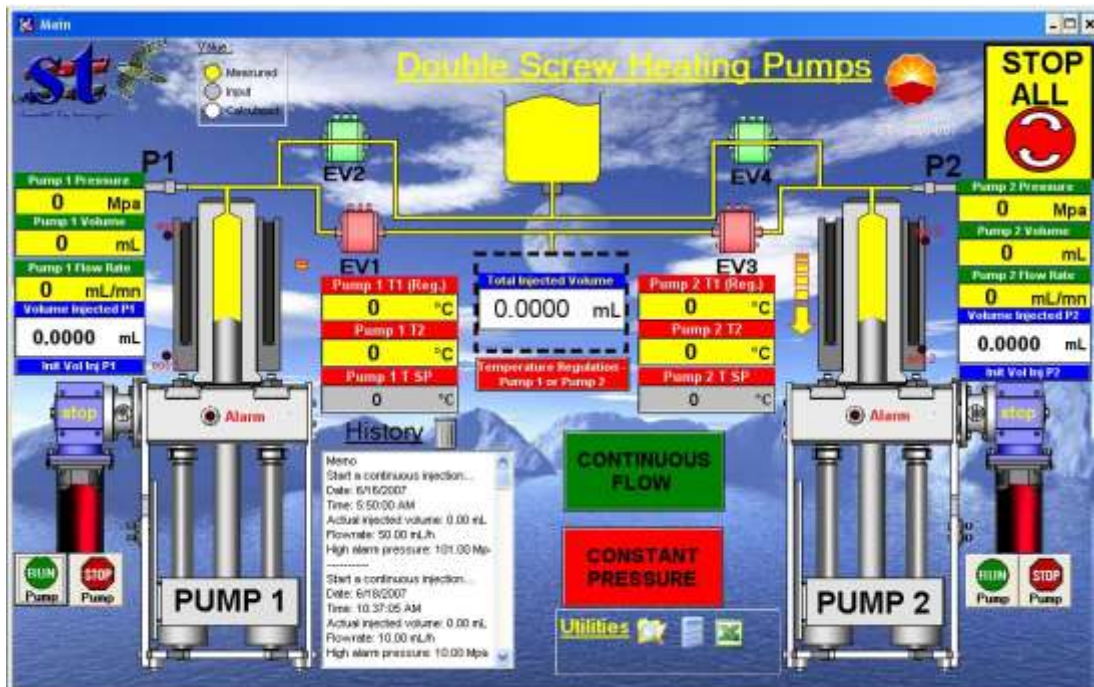
- Independent for the following operations:
 - Constant flow
 - Constant pressure
 - Predefined volume at constant flow
- Synchronized for constant flow:
 - Push / pull
 - Push / push
 - Pull / pull
- Assembled with electro valves (in option) for continuous flow and constant pressure

One piston pump is composed of:

- One chamber in stainless steel with packing
- One calibrated piston
- One driving piston system (movements executed by a gear box with a --brushless motor and high accuracy absolute encoder)

The VPDSV 500-1500D Heated has absolute pressure sensor and a safety manometer in stainless steel can be added as option.

Example of synoptic



Non contractual pictures and data