



VPSSV 500-700D



Specifications	
Volume	500 ml for each pump
Pressure	700 bar
Temperature	Ambient
Volume Accuracy	10 ⁻³ ml
Pressure Accuracy	0.1% FS
Temperature Accuracy	0.1°C
Flow Rate	0 to 2400 ml/h

General Features

This equipment is specially designed to inject in continuous flow. It's composed of 2 simple screw pumps. The volume of each pump is 500 ml.

The pump, with a synoptic (FALCON software) or with electric cabinet, can be controlled and log the value of the different parameters (pressure, volume, temperature, flow rate).



VPSSV 500-700D

Each pump can be:

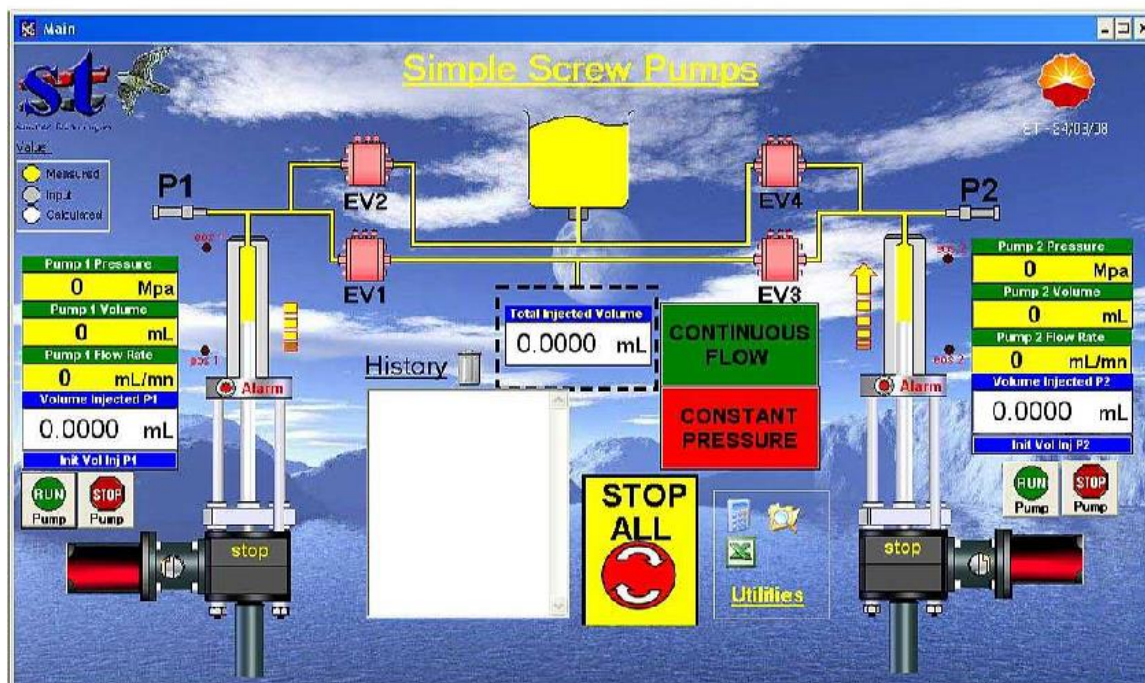
- Independent for the following operations:
 - Constant flow
 - Constant pressure
 - Predefined volume at constant flow
- Synchronized for constant flow:
 - Push / pull
 - Push / push
 - Pull / pull
- Assembled with electro valves (in option) for continuous flow and constant pressure

One piston pump is composed of:

- One chamber in stainless steel with packing
- One calibrated piston
- One driving piston system (movements executed by a gear box with a --brushless motor and high accuracy absolute encoder)

The VPSSV 500-700D has absolute pressure sensor and a safety manometer in stainless steel can be added as option.

Example of Synoptic



Non contractual pictures and data